

OP 2D

Excellent point of entry
into digital panoramic X-rays.



A success story: KaVo ORTHOPANTOMOGRAPH™ OP 2D.

The KaVo OP 2D offers an excellent point of entry for the ORTHOPANTOMOGRAPH™ family, known worldwide for impressive image quality. Since 1961, the letters “OP” have stood for premium panoramic X-ray devices, precision and reliability. An installed base of more than 60,000 systems* is the ultimate testament to this success.

OP 3D Vision

OP 3D Pro

OP 3D

OP 2D

An investment with a future.

The KaVo OP 2D is the point of entry for the KaVo world of panoramic X-rays, enables you to optimise treatment results for your patients, ensuring the highest safety levels and therefore securing sustainable investment security.

A new dimension of efficiency.

The KaVo OP 2D offers excellent image quality thanks to its V-Shape-Beam Technology, four essential panoramic programs including the possibility of segmented panoramic imaging, various options for manual fine adjustment and much more. At the same time, simple presets and the option to choose patient size directly using four selection buttons ensure an even swifter workflow in the practice.

* The 60,000 devices also include the ORTHOPANTOMOGRAPH™ from Instrumentarium Dental, the predecessor to the KaVo OP 2D.



Your benefits at a glance:

- Premium panoramic X-ray device with V-Shape-Beam Technology for optimised image quality
- High-end system technology producing clear, homogeneous images for complete, daily diagnostics
- Intuitive operation using a touchscreen with self-explanatory symbols
- Stable 5-point patient positioning for less movement artefacts

X-rays: digital. Diagnosis: ingenious.

The KaVo OP 2D was developed for dental practices and smaller X-ray centres that require an efficient and highly precise, digital panoramic system. The KaVo OP 2D is part of the exceptional ORTHOPANTOMOGRAPH™ family and can be easily integrated into the workflow of your practice.

The excellent image quality is the result of many ingenious functions, innovative technical features and a simple patient positioning. All this enables you to rely on the KaVo OP 2D for outstanding diagnosis:

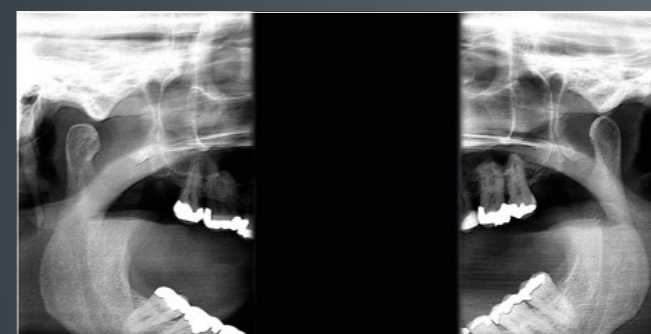
- Stable 5-point patient positioning
- Optimal imaging geometry
- Adjustable anterior layer position with 3 positioning lights
- Powerful high-frequency X-ray tubehead design
- High resolution CCD imaging sensor
- V-shaped collimation optimizes image quality
- Versatile software tools to enhance diagnostic capabilities



The standard panoramic imaging program provides clear definition of the dental anatomy including TMJs – in only 10 seconds.



The paediatric panoramic imaging program for children shows a horizontally reduced image field.



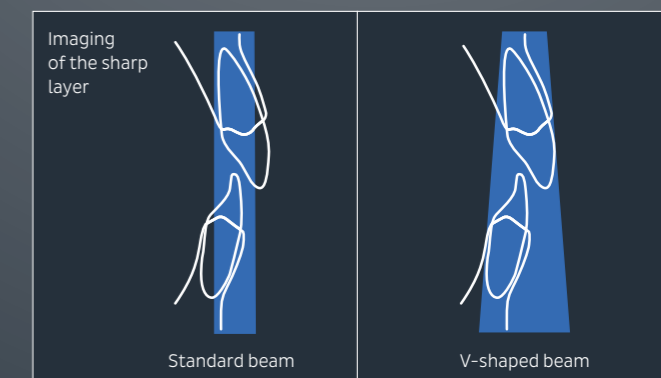
Lateral view from temporomandibular joint area with mouth closed or open.



Special program for bitewing-like illustration with specific segmentation and collimation.

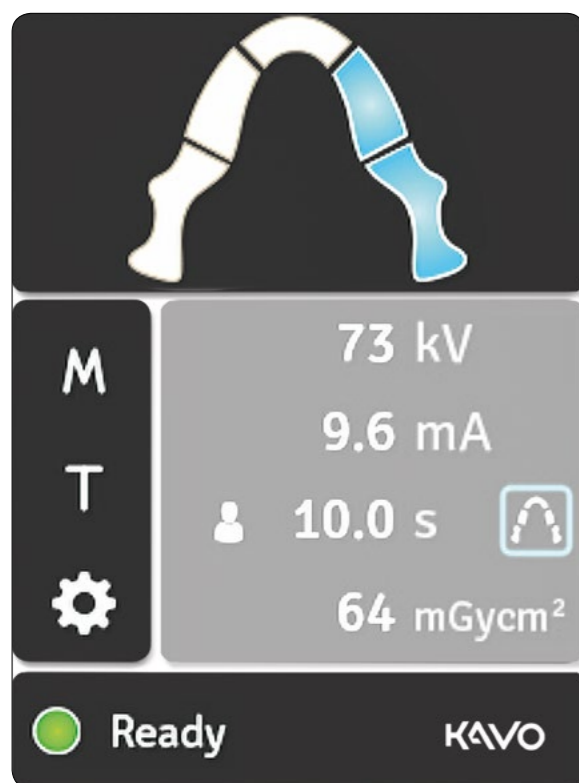
Homogeneous image presentation thanks to V-Shape-Beam Technology.

A V-shaped beam better considers the different absorption of the human anatomy than a standard beam, thus ensuring a homogeneous image presentation. As a result, the structures of the upper jaw are better penetrated and the sharp layer in the lower jaw is significantly broader.



From easy to simply self-explanatory. Operated via intuitive user-interface.

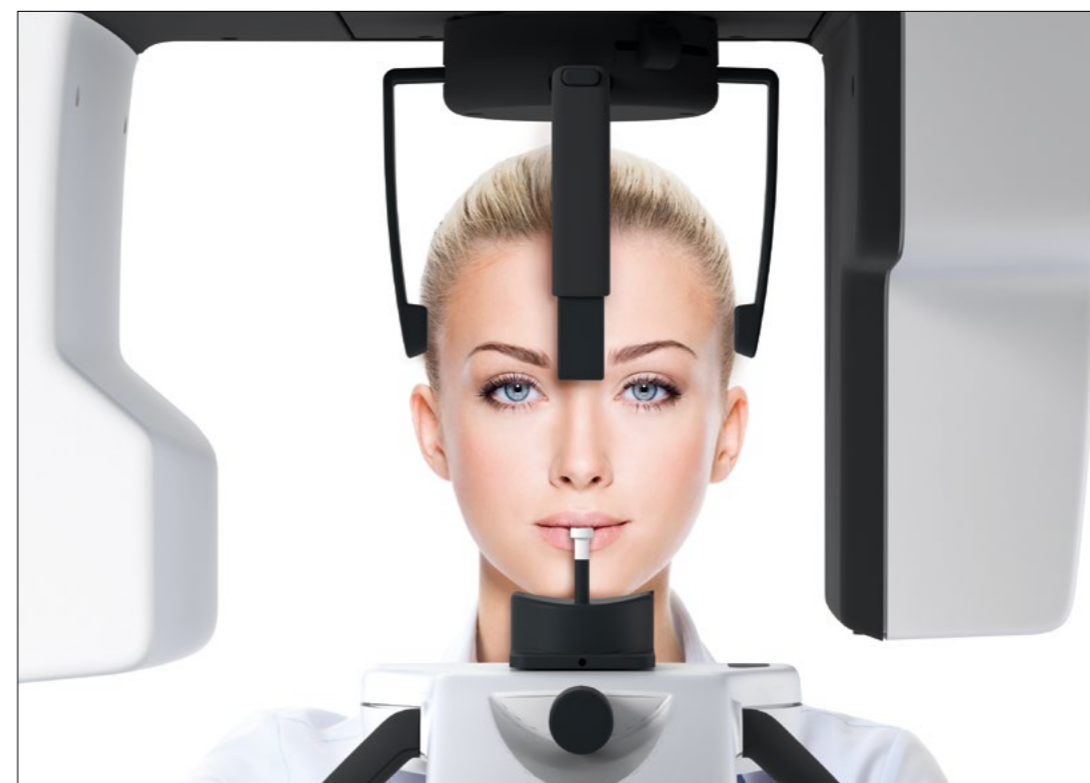
The 5.7 inch touch panel with its elegant, clearly structured user-interface supports simple and safe application. Owing to the graphical concept, all settings are self-explanatory so that your KaVo OP 2D can be operated intuitively from the onset.



With segmented panoramic program the desired areas can be selected so the radiation dose is adapted to the symptom.

5-point patient positioning for less movement artefacts.

Intuitive 5-point patient positioning system holds the patient still during the imaging procedure to reduce movement artefacts. Three laser positioning lights make positioning accurate. The sharp layer is easily adjustable for every patient.



The secure 5-point positioning system with chin rest, bite block and head rest with forehead and temple points prevents patient movement.

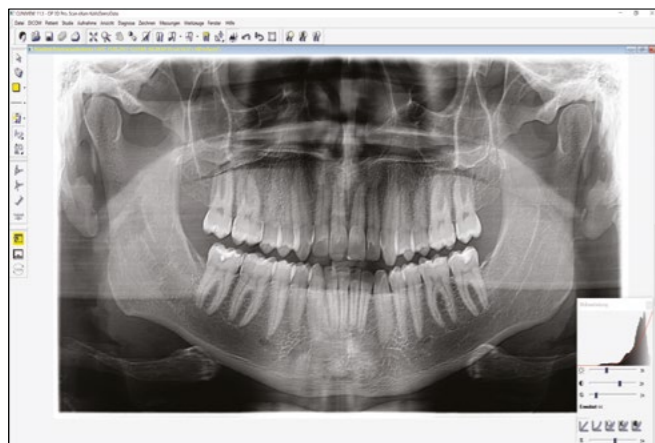
The present: full diagnostics. The future: integrated workflow.

The comprehensive X-ray software CLINIVIEW™ will be installed with your new device. In addition you are already prepared to use the new DTX Studio™* unifying software platform for 2D and 3D diagnostics, opening up a whole new era of digital workflow integration.

The proven and well known CLINIVIEW™ software already stores its data compatible to the new DTX Studio™ software platform. Your office will already be prepared to take advantage of a future constant stream of new enhancements that will cover all fields of modern dentistry and dental technology. Compatible with

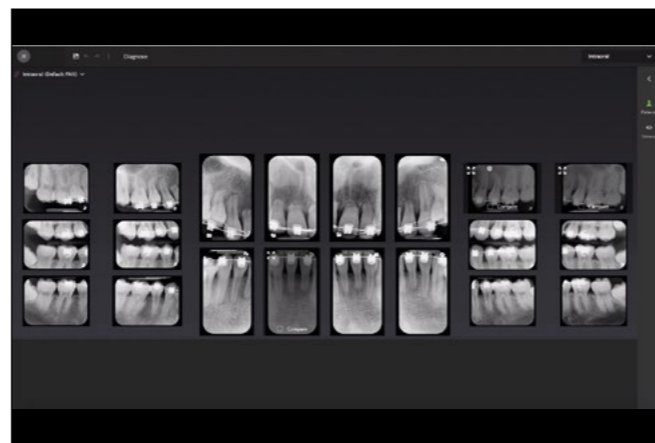
Windows and Mac operating systems, the DTX Studio™ platform will integrate both existing and future devices as well as current software provisions into one unified working process. CLINIVIEW™ is prepared to support a smooth transition into the new future and step by step opens new possibilities you may never had expected.

CLINIVIEW. 2D X-ray software.



Screen with panoramic image.

DTX Studio™. Consistent workflow.



Screen with intraoral workspace.

* Installations possible as soon as DTX Studio™ platform is available in your region.

Technical specifications.

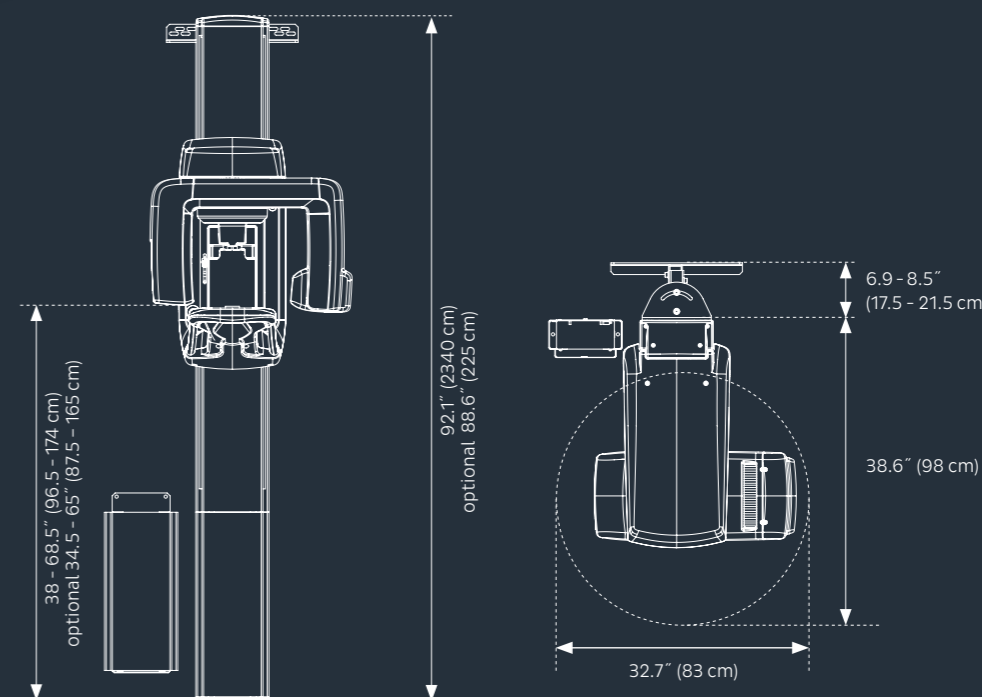
Minimum System Requirements for Acquisition Computer

Generator	High frequency DC, operating frequency 100 - 130kHz
X-ray Tube	D-054 5B or equivalent
Focal Spot	0.5 mm IEC 60336/2005
Filtration	Total filtering minimum 2.6 mm Al
Tube Voltage	63 - 81 kV
Tube Current	6-12 mA with 220-240 VAC (Tube current limited at 100-120 VAC)
Nominal Voltage (power supply)	100-120 VAC or 220-240 VAC
Weight	120 kg
Sensor Pixel Size	48 µm
Image Pixel Size	96 µm
Image Field Height	147 mm
PC Minimum requirements for image capture	Pentium 4 @ 2GHz, 2GB RAM, 8GB HDD space
TWAIN interface	Optional
DICOM* compatibility	Optional
PC connection	100Base-TX
Operating System	Windows 7, Windows Vista or Windows 10 Pro or Enterprise, 64-bit Windows 8.1 Pro or Enterprise, 64-bit Windows 7 Professional, Ultimate or Enterprise, 64-bit, with SP1

Easy wheelchair accessibility.

* DICOM is the registered trademark of the National Electrical Manufacturers Association for their standard publications on the digital exchange of medical data.

Dimensions.



Dental Excellence in every area.



Practice equipment

KaVo treatment units and lights, dental chairs, patient communication systems, dental microscope and additional operatory accessories.



Instruments

Dental straight and contra-angle handpieces, turbines, air polishing systems and small equipment for all application areas including diagnosis, prophylaxis, restorative, surgery, endodontics and instrument care.



Imaging

Intraoral X-ray equipment, sensors and imaging plate systems, panoramic and cephalometric in combination with CBCT, as well as dedicated CBCT devices for every indication in dentistry.



CAD/CAM

Dental CAD/CAM solutions for premium aesthetic, natural-looking and long-lasting restorative work, suitable for dentists and dental technicians.

The products, features and services shown and described in this catalogue are not available in all countries. All specifications were correct at the time of publication. KaVo Dental GmbH assumes no liability for deviations in colour or form from the illustrations, mistakes or printing errors and reserves the right to make changes to the brochures at any time. Reprinting, even just of excerpts, is only permitted with the consent of KaVo Dental GmbH.

ORTHOPANTOMOGRAPH™, OP™ and CLINIVIEW™ are either registered trademarks or trademarks of KaVo Kerr Group Finland in the United States and/or other countries. KaVo™ is either registered trademark or trademark of Kaltenbach & Voigt GmbH in the United States and/or other countries. All other trademarks are property of their respective owners.

Palodex Group OY | Nahkelantie 160 | FI-04300 Tuusula | Finland
www.kavokerr.com

KaVo Dental GmbH | Bismarckring 39 | 88400 Biberach | Germany
www.kavo.com

KAVO
Dental Excellence